

EASY LOCATION OF LYMPH NODES FOR PREFERRED HYPOTHETICAL MAGNETIC PULSING SITES

JAN. 10, 1997 Revision Copyright © 1997 Robert C. Beck, D.Sc.

Press either flat side of coil tightly into skin and "flash" each site three to five pulses daily after "ready" lamp lights

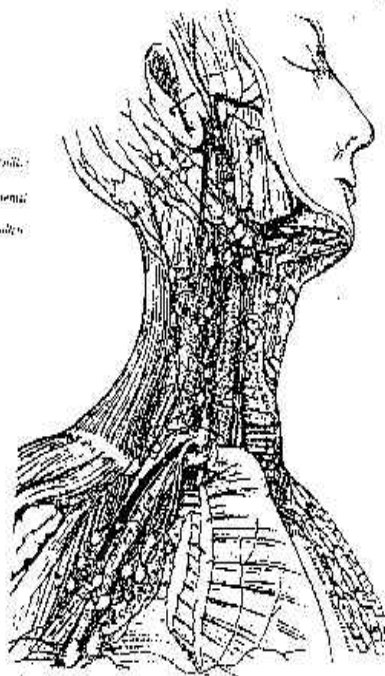
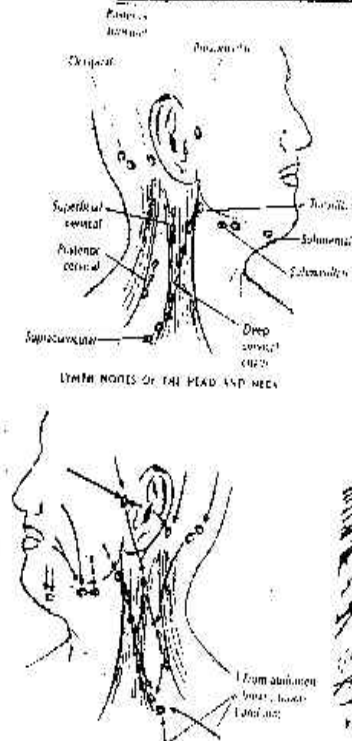


Fig. 25 - The deep lymph nodes and glands of the neck and thorax.

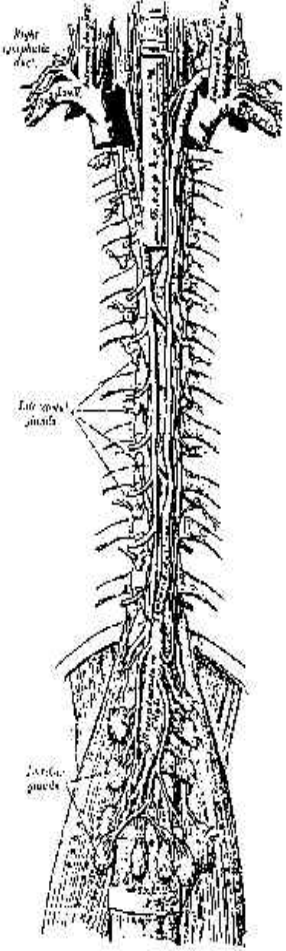


Fig. 26 - The thoracic and right lymphatic drainage.

← Central lymphatic drainage
 ← Inferior lymphatic drainage (i.e. from axilla and thorax)
LYMPHATIC DRAINAGE OF THE HEAD AND NECK

