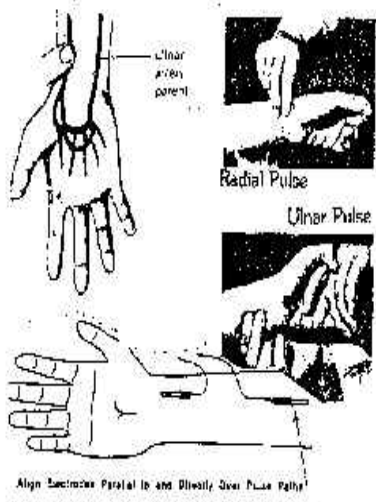


EASY LOCATION OF PREFERRED SITES FOR HYPOTHETICAL BLOOD ELECTRIFICATION

Revision January 28 1997 Copyright © 1997 Robert C Beck, D.Sc.



Align Electrode Parallel to and Directly Over Pulse Path!

Fig. 223. Location of hypothetical placement of the two probes on the hand, forearm and wrist. A hand held with thumb up and index to the right is shown. The two probes before being placed in the skin, outer surface of the hand and wrist. They are about 1 cm apart. Radial Artery

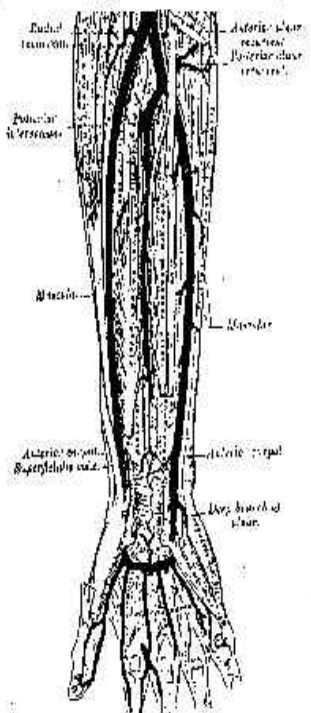


Fig. 224 - Ulnar and radial arteries - Deep view

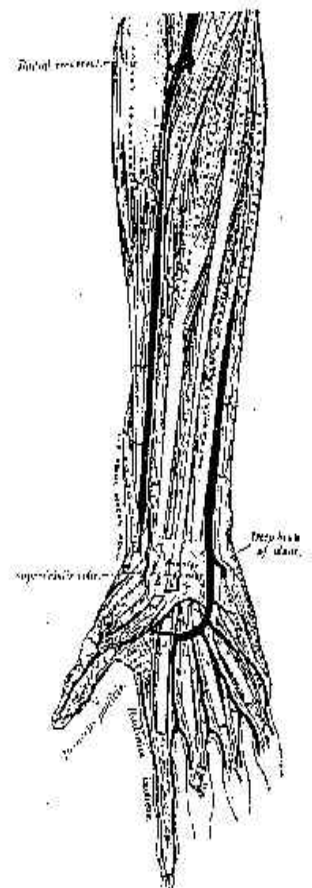
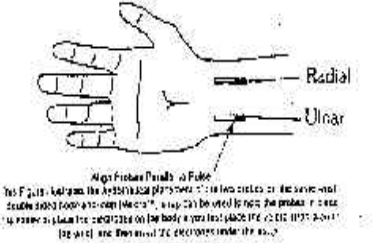
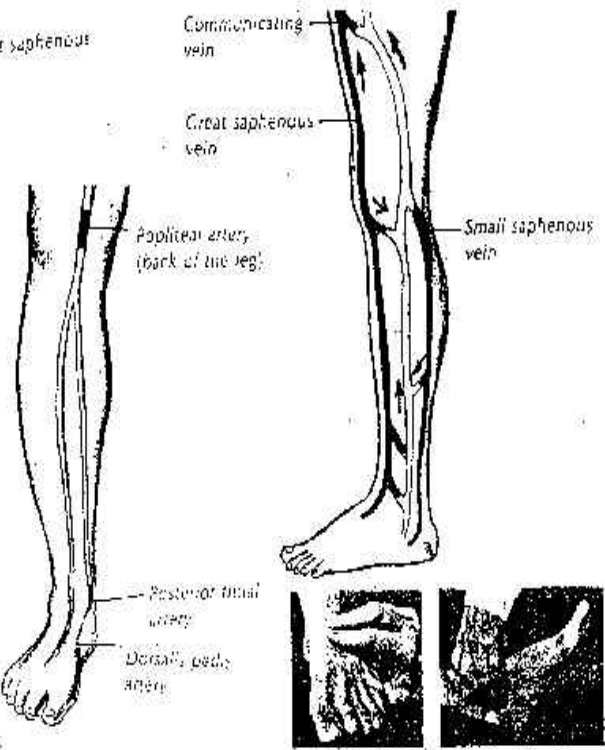
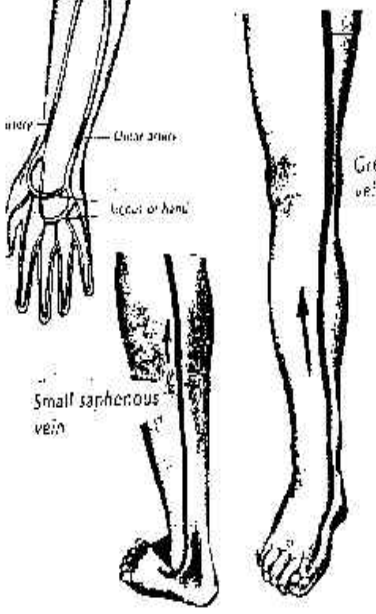


Fig. 224 - The radial and ulnar arteries



Align Probes Parallel to Pulse Path!